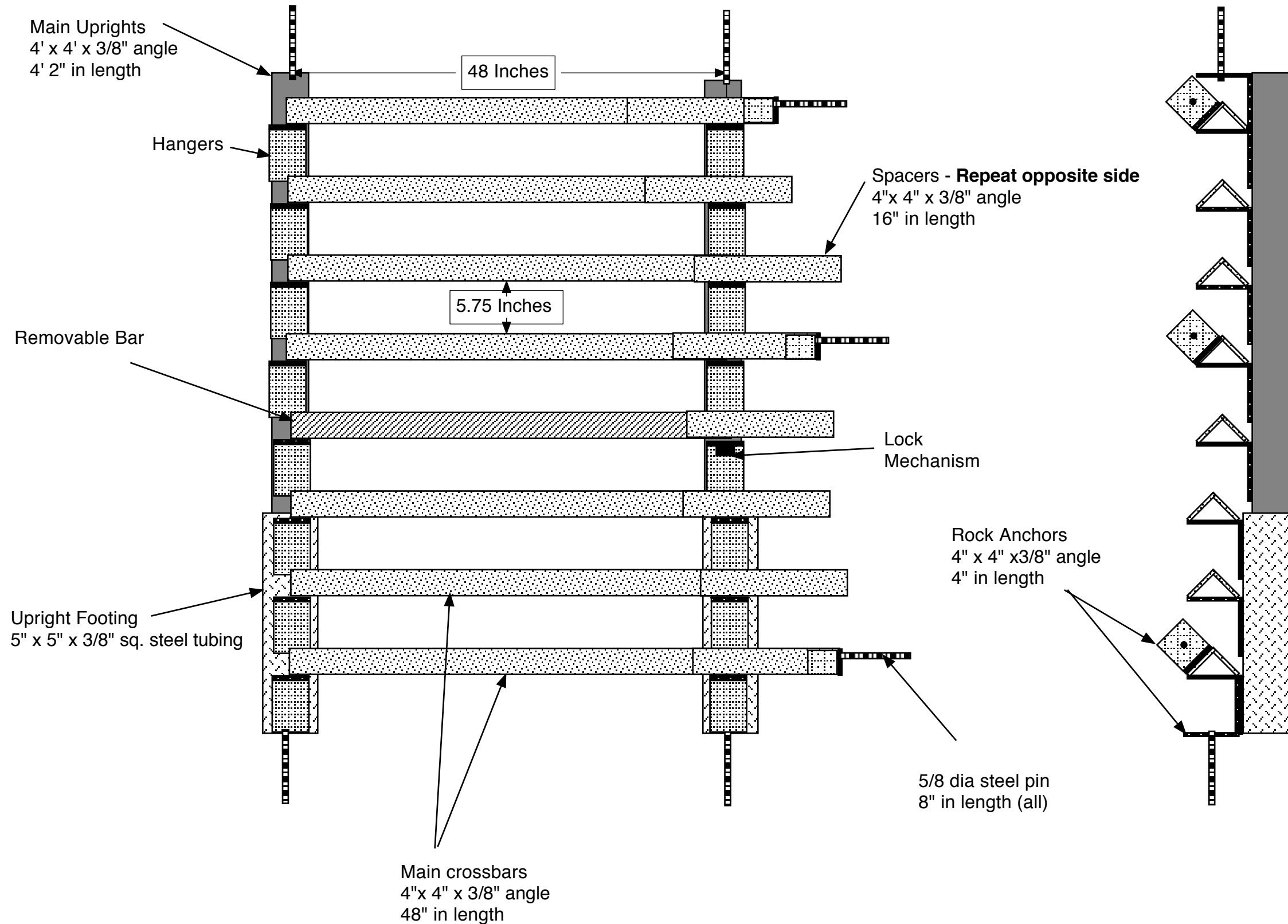


Adjustable Bat-Friendly Grate

Height is adjustable from 4' 2" to 6'
Width is adjustable from 4' 2" to 6'



Construction Notes:

1. Upright footings are pinned to the adit floor and roof using 5/8" dia steel rods.
2. All pins must penetrate a minimum of 8".
3. After drilling for pins, insert the main upright into the upright footing. Then stand the assembly in place and pin the footing to the floor. Extend the main upright to the roof and pin to roof.
4. Weld the main upright to the footing to complete the installation.
5. Locate hangers to provide 5.3/4" clearance as shown. Refer to hanger detail sheet.
6. Install main crossbars. Crossbars must extend on hanger 2 inches.
7. Spacing for top crossbar may expand to 8"
8. The fourth crossmember from the bottom is removable in all applications. See detail sheet for further information
9. The distance from the main upright to the adit rib is bridged with 16" spacers as shown. These spacers may be extended as necessary but a minimum 4" overlap with the main crossbar must be maintained. Weld spacer to main crossbar to complete installation.
10. The top, bottom and 5th crossmembers must be pinned to the adit ribs as shown.



U.S.D.A. Forest Service

REGION 3
Adjustable bat-grate design